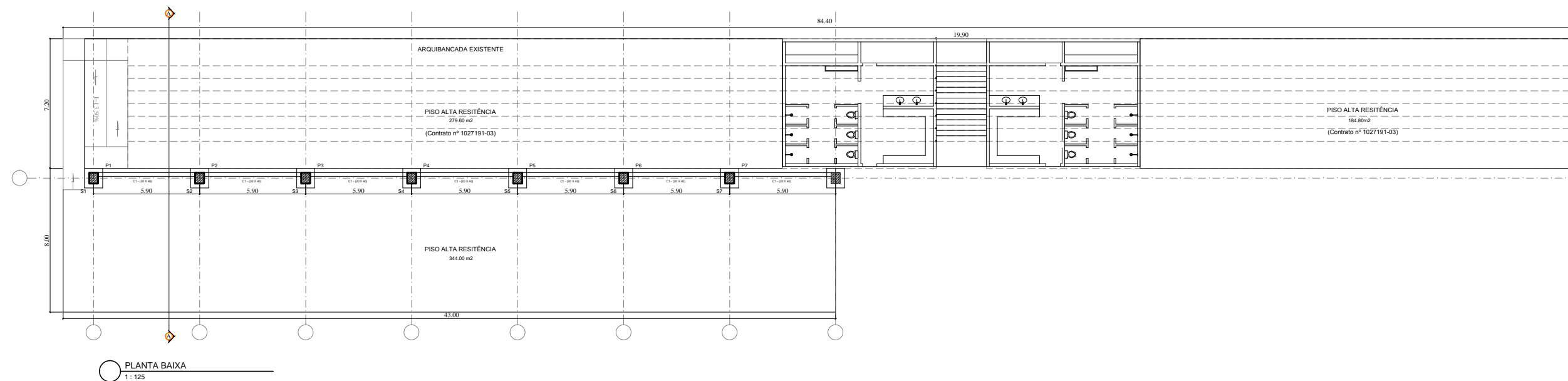
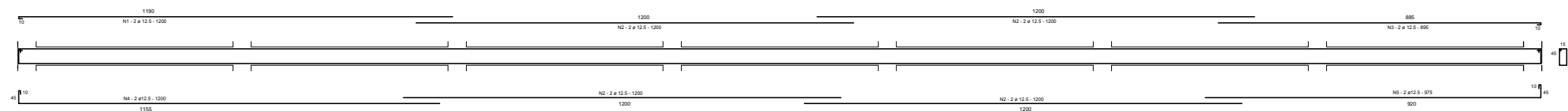


CAMPO DE FUTEBOL DE JACIGUÁ



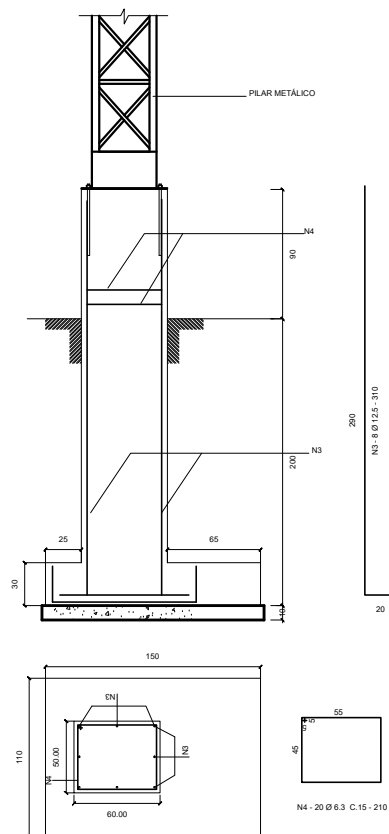
C1 - (20 x 40)



N	Ø	QUANT.	COMPRIMENTO	
			UNIT	C.TOTAL
1	12.5	2	1200	2.400
2	12.5	8	1200	9.600
3	12.5	2	895	1.790
4	12.5	2	1200	2.400
5	12.5	2	975	1.950
6	6.3	287	130	37.310

RESUMO DO AÇO			
AÇO	Ø	C.TOTAL	PESO (Kg)
CA-50	6.3	37.310	94
	12.50	18.140	180
PESO TOTAL			274

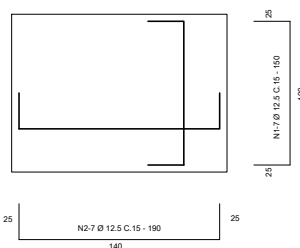
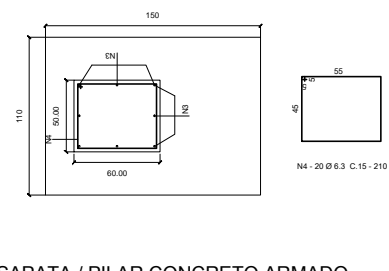
CONCRETO ESTRUTURAL 25.0 MPA - 3.78 m³
FORMA - 45.36 m²



N	Ø	QUANT.	COMPRIMENTO	
			UNIT	C.TOTAL
1	12.5	7	150	1.050
2	12.5	7	190	1.330
3	12.5	8	310	2.480
4	6.3	20	210	4.200

RESUMO DO AÇO			
AÇO	Ø	C.TOTAL	PESO (Kg)
CA-50	6.3	4.200	11
	12.50	4.860	49
PESO TOTAL			60

CONCRETO ESTRUTURAL 25.0 MPA = 0.96 m³
CONCRETO MAGRO = 0.165 m³
FORMA = 7.06 m²



DETALHE SAPATA / PILAR CONCRETO ARMADO
ESC.: 1/25

PREFEITURA MUNICIPAL DE VARGEM ALTA
ESTADO DO ESPÍRITO SANTO

PROJETO PARA COBERTURA DA ARQUIBANCADA
NO CAMPO DE FUTEBOL DE JACIGUÁ.

PROJETO: PROJETO ESTRUTURAL

ESCALA: INDICADA	DATA: AGOSTO/2017	DESENHO: IAN BISMARCK	PRINCHA: 01
------------------	-------------------	-----------------------	-------------

PREFEITO MUNICIPAL: JOÃO CHRISÓSTOMO ALTOÉ

RESP. TÉCNICO: GERALDO BRUNORO ESTEVES
CREA-ES 33738/D